

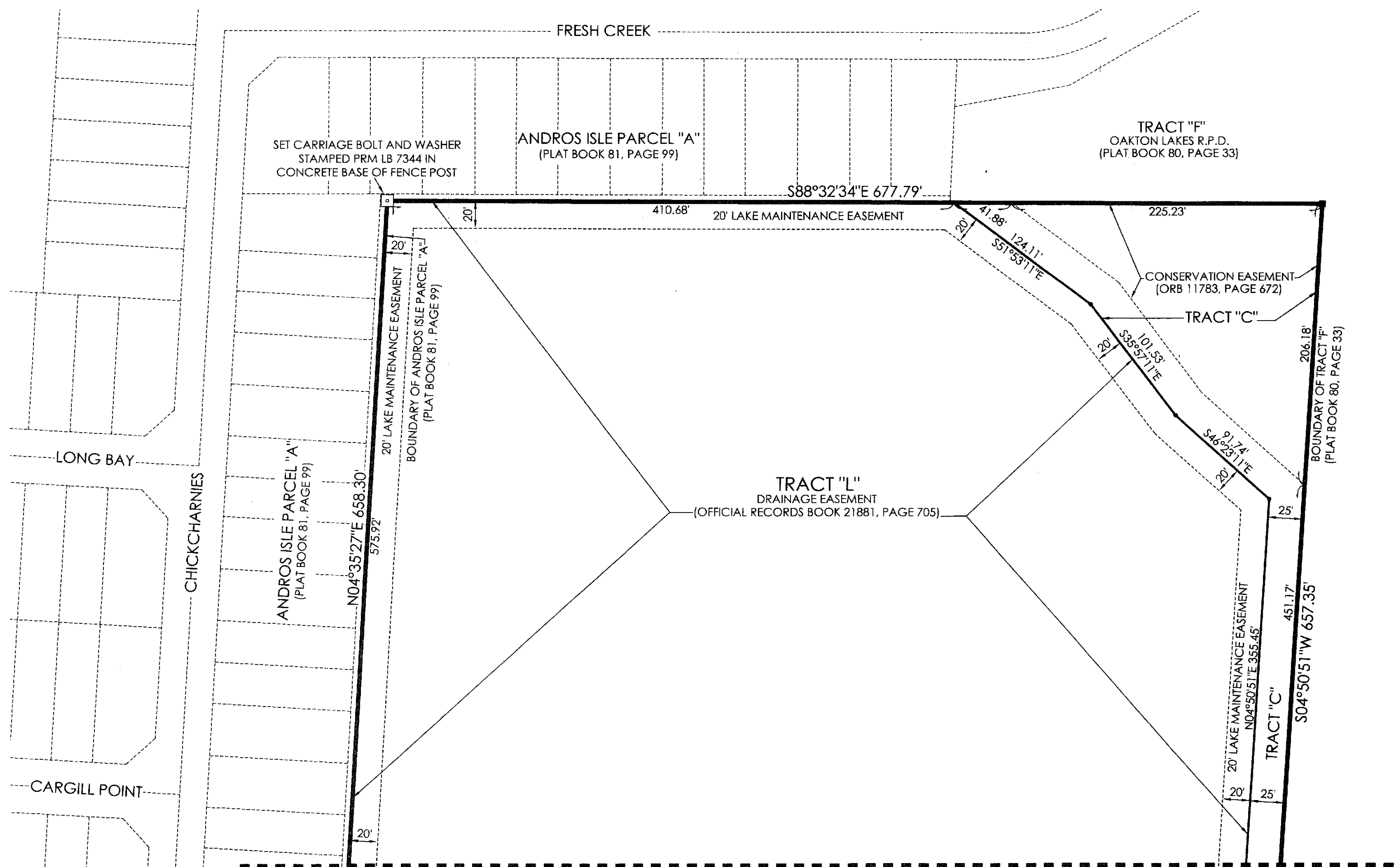
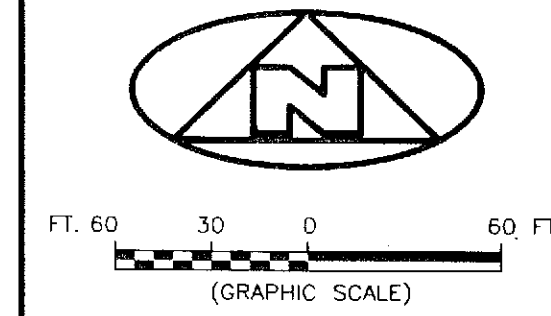
112

JUNE 2010

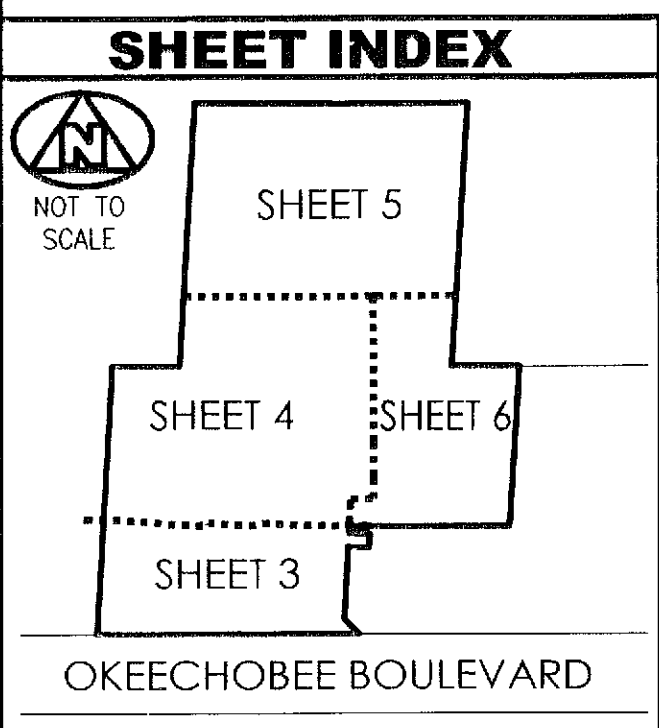
# OAKTON PRESERVE

SHEET 5 OF 6

BEING A REPLAT OF TRACT "R", OAKTON COMMONS CPD, RECORDED IN PLAT BOOK 112, PAGE 85, PUBLIC RECORDS, PALM BEACH COUNTY, FLORIDA AND LYING IN SECTION 20, TOWNSHIP 43 SOUTH, RANGE 42 EAST, CITY OF WEST PALM BEACH, PALM BEACH COUNTY, FLORIDA



FOR MATCH SEE SHEET 4 OF 6



**LEGEND**

(R)	DENOTES A RADIAL LINE	R	DENOTES RADIUS DISTANCE
C/L	DENOTES A CENTERLINE	L	DENOTES ARC LENGTH DISTANCE
DE	DENOTES A PRIVATE DRAINAGE EASEMENT	CA	DENOTES CENTRAL ANGLE
UE	DENOTES UTILITY EASEMENT	LCB	DENOTES LONG CHORD BEARING
ORB	DENOTES OFFICIAL RECORDS BOOK	CHD	DENOTES CHORD DISTANCE
□	DENOTES A SET PERMANENT REFERENCE MONUMENT 4"x4" CONCRETE MONUMENT WITH BOLT AND DISK STAMPED LB 7344 (UNLESS OTHERWISE NOTED)	■	DENOTES A FOUND PERMANENT REFERENCE MONUMENT 4"x4" CONCRETE MONUMENT WITH DISK STAMPED LS 2424

**SURVEYOR'S NOTES**

1. THE BEARING BASIS (BASE BEARING), AS SHOWN HEREON, IS BASED ON THE STATE PLANE GRID AZIMUTH BEARING OF NORTH 88°45'53" WEST, ALONG THE NORTH RIGHT-OF-WAY LINE OF OKEECHOBEE BOULEVARD, AS SHOWN HEREON, AND ALL OTHER BEARINGS ARE RELATIVE THERETO
2. IN THOSE INSTANCES WHERE UTILITY OR DRAINAGE STRUCTURES ARE CONSTRUCTED IN CONFLICT WITH THE PLATTED PERMANENT CONTROL POINT POSITION STRADDLERS MONUMENTED AS PERMANENT CONTROL POINTS WILL BE SET TO REFERENCE THE PLATTED POSITION.
3. LINES THAT INTERSECT CURVES ARE RADIAL UNLESS OTHERWISE NOTED.
4. THIS INSTRUMENT WAS PREPARED BY STEPHEN L. SHIRLEY, PROFESSIONAL SURVEYOR AND MAPPER NO. 3918, IN AND FOR THE OFFICES OF ASSOCIATED LAND SURVEYORS, INC., 4152 WEST BLUE HERON BOULEVARD, SUITE 121, RIVIERA BEACH, FLORIDA, 33404

**ASSOCIATED LAND SURVEYORS, INC.**

4152 W. BLUE HERON BOULEVARD-SUITE 121  
RIVIERA BEACH FLORIDA 33404 LB 7344  
PHONE: (561) 848-2102 FAX: (561) 844-7659 EMAIL: als@alssurvey.net

FILE: Oakton Preserve	
SCALE: 1"=30'	WO NO.: P226
DWN: KVC	SHEET 5 OF 6